

STATION	BEARING	DISTANCE
1	N06°25'26"E	12.11
2	N14°05'18"E	64.45
3	S81°11'01"W	60.00
4	S52°07'35"E	36.98
5	S36°11'01"W	35.96
6	N30°32'56"W	40.53
7	N55°40'46"W	36.49
8	N34°29'34"E	36.38
9	S85°05'46"E	10.00
10	S85°05'46"E	10.00
11	S36°15'31"E	66.00
12	S36°56'56"E	25.57
13	S16°38'55"E	12.84
14	S00°15'19"W	51.17
15	S03°08'56"W	57.05
16	S35°08'31"E	14.77
17	S40°11'01"E	16.89
18	S46°35'21"E	44.23
19	S42°15'10"E	31.39
20	S36°05'29"E	27.37
21	S10°19'57"W	82.64
22	S25°41'39"E	17.95
23	S41°31'46"E	18.52
24	S57°00'51"E	62.25
25	S25°34'32"E	45.95
26	S12°54'49"E	53.52
27	S50°41'31"E	18.12
28	S35°14'51"E	47.66
29	S88°49'39"E	18.88
30	N10°06'05"E	39.49
31	S78°08'33"E	68.56
32	N45°46'59"E	80.13
33	N52°17'55"E	28.20
34	N04°34'27"E	14.27
35	N20°17'55"W	36.06

C	NO	DIRECTION	CHORD	DELTA	RADIUS	LENGTH	TAN
1	N78°12'52"E	100.83	805.56	18	973.38	100.88	50.48
2	N55°10'41"W	131.99	849.15	30	158.36	136.15	72.60
3	N08°20'28"W	18.90	844.24	55	25.00	19.38	10.21
4	S76°21'05"W	36.61	802.12	44	948.38	36.62	18.31
5	N48°19'17"W	91.40	806.30	32	805.00	91.45	45.78
6	S78°58'30"E	66.12	894.34	01	45.00	74.27	48.74
7	N33°23'25"W	89.89	174.15	49	45.00	126.87	898.22

MARTIN DOWNS PLAT 5

"QUAIL MEADOW"

BEING A PART OF MARTIN DOWNS, A P.U.D., LYING IN SECTIONS 13 AND 14, TOWNSHIP 38 SOUTH, RANGE 40 EAST, MARTIN COUNTY, FLORIDA.

JANUARY, 1983 SHEET 2 OF 2

- NOTES:
- 1.) THERE SHALL BE NO TREES, SHRUBS, OR ANY KIND OF CONSTRUCTION PLACED ON DRAINAGE EASEMENTS.
 - 2.) THERE SHALL BE NO PERMANENT STRUCTURES CONSTRUCTED ON UTILITY EASEMENTS.
 - 3.) MINIMUM BUILDING SETBACKS SHALL BE AS FOLLOWS: SANDHILL ROAD 15', S.W. QUAIL MEADOW TRAIL 15', and GOLF COURSE BOUNDARY 10'.
 - 4.) PERMANENT REFERENCE MONUMENTS (P.R.M.'S) DESIGNATED THUS:
 - 5.) PERMANENT CONTROL POINTS (P.C.P.'S) DESIGNATED THUS:
 - 6.) D.E. DENOTES DRAINAGE EASEMENT.
 - 7.) U.E. DENOTES UTILITY EASEMENTS.
 - 8.) ALL BEARINGS SHOWN HEREON ARE BASED ON THE NORTH LINE OF SECTION 14 - 38 - 40, BEING N 89°42'13"W. ALL BEARINGS SHOWN ARE RELATIVE THERETO.

I, LOUISE V. ISAACS, CLERK OF THE CIRCUIT COURT OF MARTIN COUNTY, FLORIDA, HEREBY CERTIFY THAT THIS PLAT WAS FILED FOR RECORD IN PLAT BOOK 9, PAGE 40, MARTIN COUNTY, FLORIDA, PUBLIC RECORDS, THIS DAY OF _____, 1983.

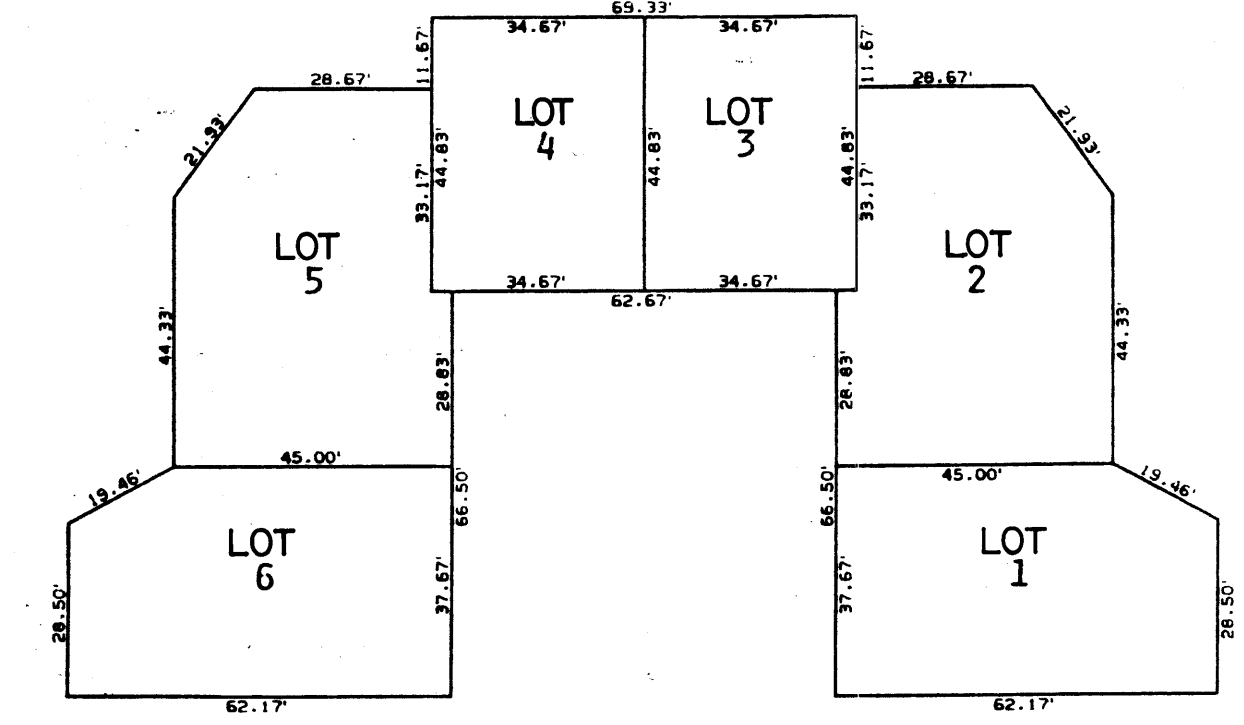
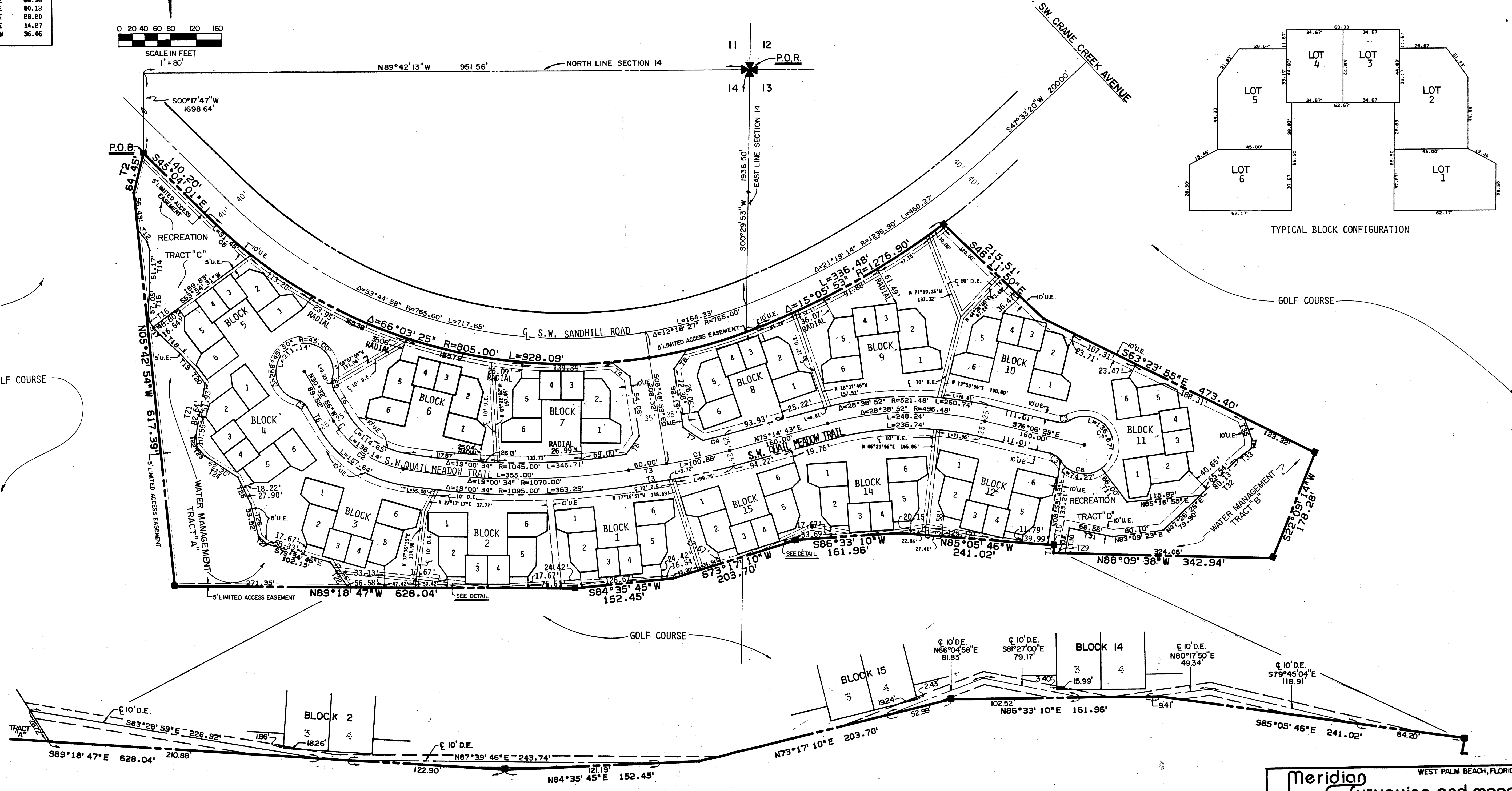
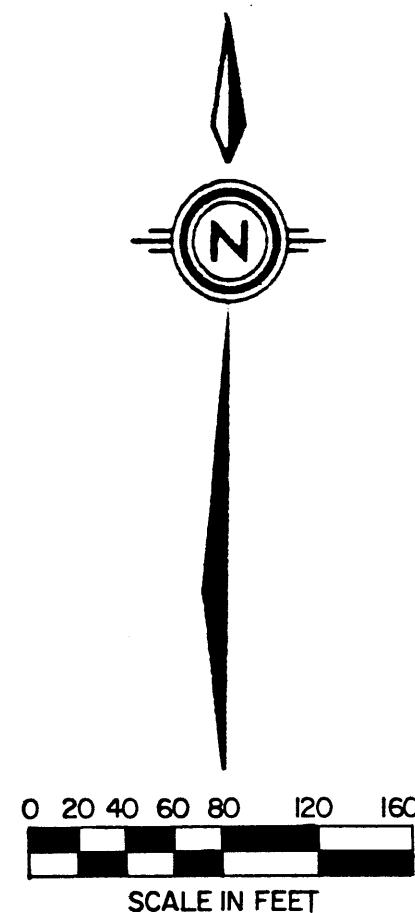
LOUISE V. ISAACS, CLERK CIRCUIT COURT MARTIN COUNTY, FLORIDA

BY: _____ DEPUTY CLERK

FILE NO. _____

(CIRCUIT COURT SEAL)

NOTE: ALL SIGNATURES ON PLAT MUST BE IN INDIA INK.



TYPICAL BLOCK CONFIGURATION

DETAIL - 1" = 40'

Meridian Surveying and mapping inc. WEST PALM BEACH, FLORIDA

DRAWN	M.E.H.	DATE	JAN. 83
CHECKED		SCALE	1" = 80'
DRAWING NO.	82 - P - 043		

MARTIN DOWNS PLAT 5
"QUAIL MEADOW"